

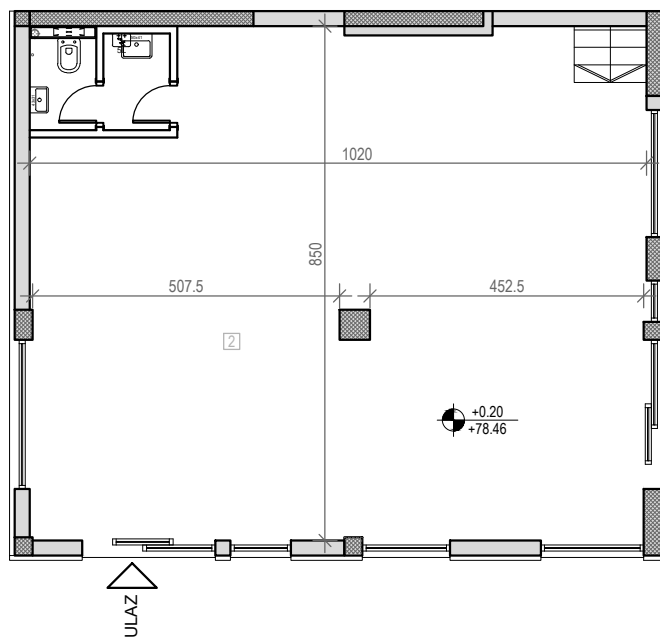
LOKAL

STAMBENA ZGRADA

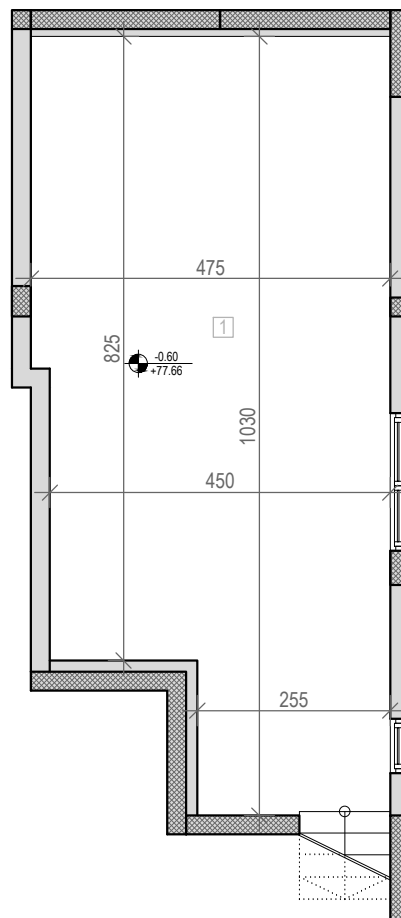
Su+P+2+Pk

Novi Sad, Ul. Teodora Pavlovića 6

K.P. 2963, K.O. Novi Sad II



osnova prizemlja



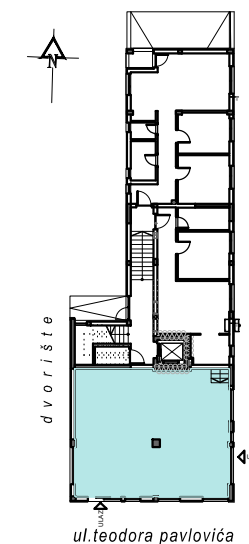
osnova suterena

| S U / P R | | |
|---------------|-----------------|-----------------------------|
| L O K A L | | |
| br. | prostorija | površina/m ² |
| 1 | lokal suterena | 44,09 |
| 2 | lokal prizemlje | 84,31 |
| UKUPNO | | 128.40 m² |

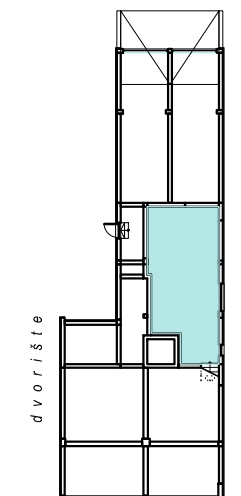


LEGENDA SIMBOLA:

- VENTILATOR
- KANALIZACIONA VERTIKALA
- VENTILACIONI KANAL
- RADIJATOR/SUŠAČ (KUPATILO)
- UNUTRAŠNJA JEDINICA KLIME
- SPOLJNA JEDINICA KLIME



OSNOVA PRIZEMLJA



OSNOVA SUTERENA