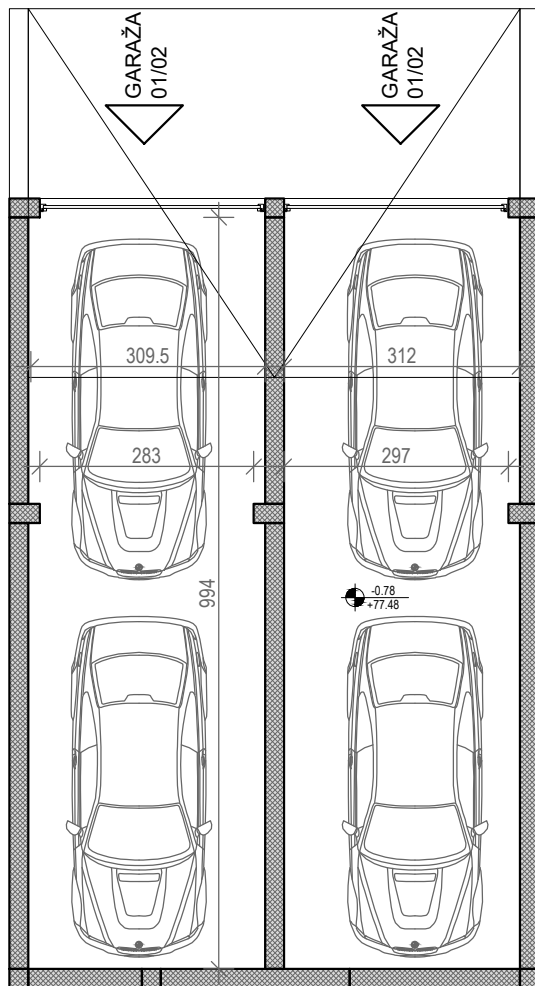


osnova suterena - garaže



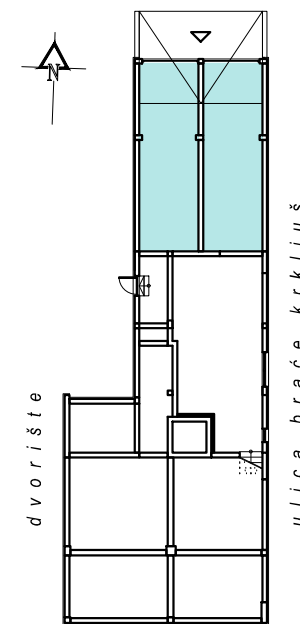
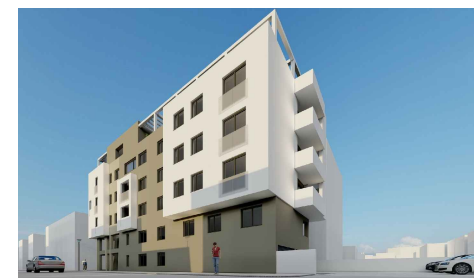
STAMBENA ZGRADA

Su+P+2+Pk

Novi Sad, Ul. Teodora Pavlovića 6

K.P. 2963, K.O. Novi Sad II

SUTEREN - GARAŽA		
br.	prostorija	površina/m <sup>2</sup>
1/2	GARAŽA	31,11
3/4	GARAŽA	31,01



ul.teodora pavlovića