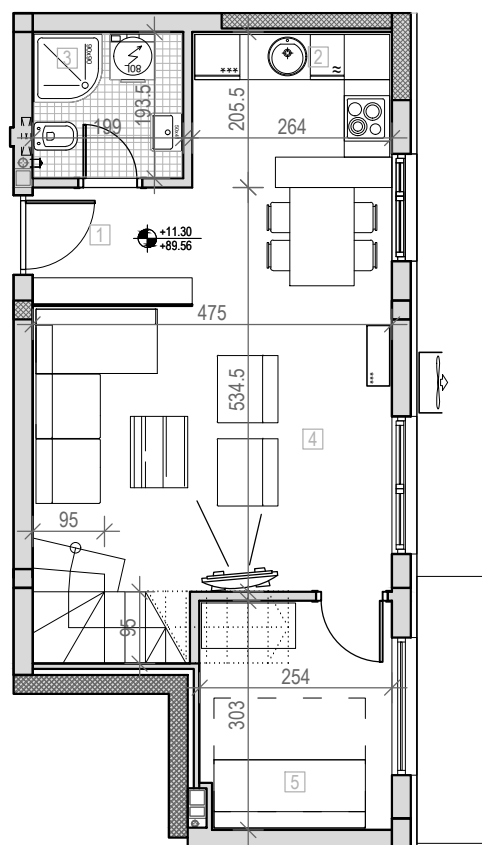


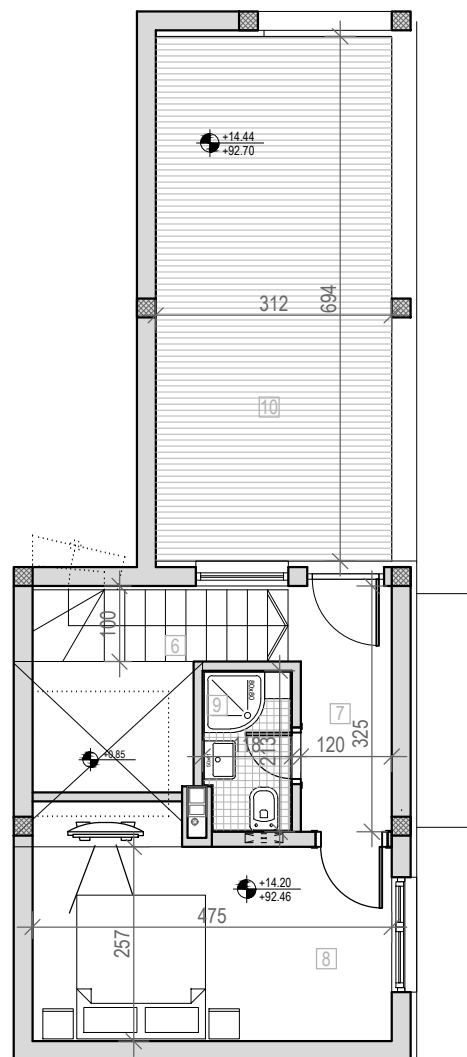
osnova stana br. 11
 potkrovlje

STAMBENA ZGRADA
 Su+P+2+Pk

Novi Sad, Ul. Teodora Pavlovića 6
 K.P. 2963, K.O. Novi Sad II



osnova potkrovlja

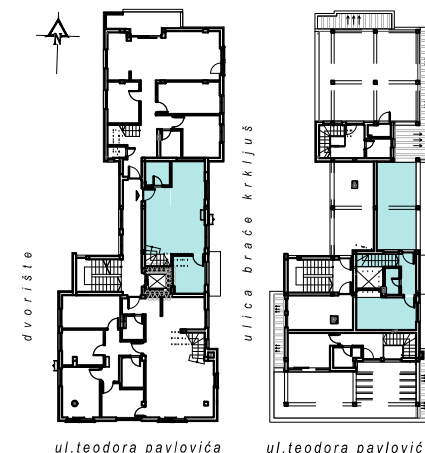


osnova krovne terase

POTKROVLJE		
STAN BR. 11		
br.	prostorija	površina/m ²
1	ULAZ	3,08
2	KUHINJA	5,34
3	KUPATILO	3,85
4	DN. SOBA	22,09
5	SP. SOBA	7,62
ukupno		41,98 m²
krovnna terasa		
6	STEPENIŠTE	3,21
7	HODNIK	4,04
8	SP. SOBA	12,21
9	WC	2,44
10	TERASA	21,65
ukupno		43,55 m²
UKUPNO		85,53 m²

LEGENDA SIMBOLA:

	VENTILATOR
	KANALIZACIONA VERTIKALA
	VENTILACIONI KANAL
	RADIJATOR/SUŠAČ (KUPATILO)
	UNUTRAŠNJA JEDINICA KLIME
	SPOLJNA JEDINICA KLIME



ul.teodora pavlovića

ul.teodora pavlovića