

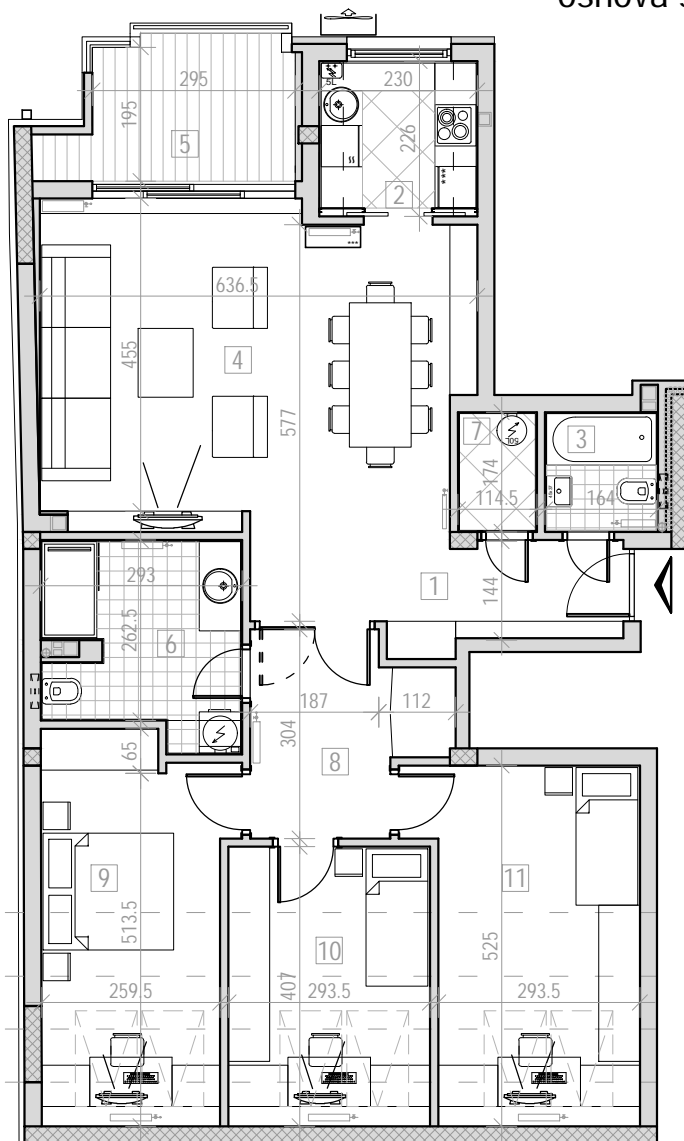
osnova stana br. 26  
 potkrovlje

STAMBENA ZGRADA

Po+P+3+Pk

Novi Sad, Ul. or a Rajkovi a 24-26

K.P. 8600 i 8601, K.O. Novi Sad I



h=2.60m  
 h=2.00m  
 h=1.50m  
 h=1.00m

POTKROVLJE STAN BR. 26		
br.	prostorija	površina/m <sup>2</sup>
1	ULAZ	7.14
2	KUHINJA	4.83
3	KUPATILO	2.85
4	DN. SOBA	30.26
5	LO A	6.81
6	KUPATILO	7.95
7	OSTAVA	1.99
8	DEGAŽMAN	7.34
9	SP. SOBA	11.26
10	SP. SOBA	7.78
11	SP. SOBA	11.86
UKUPNO		100.07 m <sup>2</sup>

.\131020\_r02-z+.jpg

