

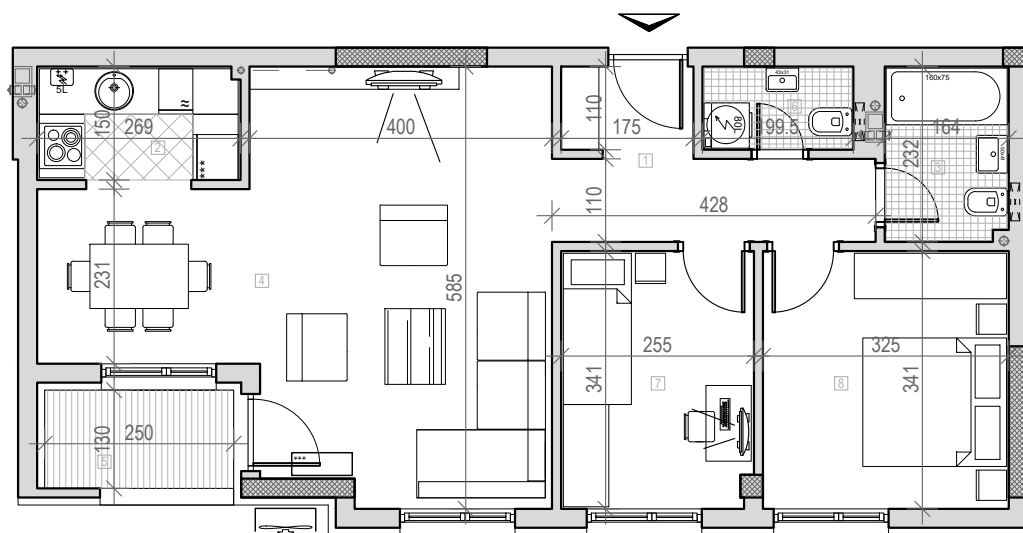
osnova stana br. 17  
II sprat

STAMBENA ZGRADA

Po+P+2+Pk

Novi Sad, Ul. Bele njive 39 i 41







K.P. 8497 i 8498, K.O. Novi Sad I



II SPRAT		
STAN BR. 17		
br.	prostorija	površina/m <sup>2</sup>
1	ULAZ	6,74
2	KUHINJA	4,03
3	KUPATILO	3,80
4	DN. SOBA	29,12
5	LOBA	3,25
6	WC	2,19
7	SP. SOBA	8,61
8	SP. SOBA	11,08
<b>UKUPNO</b>		<b>68.82m<sup>2</sup></b>



**LEGENDA SIMBOLA:**

	VENTILATOR
	KANALIZACIONA VERTIKALA
	VENTILACIONI KANAL
	RADIATOR/SUŠAČ (KUPATILO)
	UNUTRAŠNJA JEDINICA KLIME
	SPOLJNA JEDINICA KLIME

