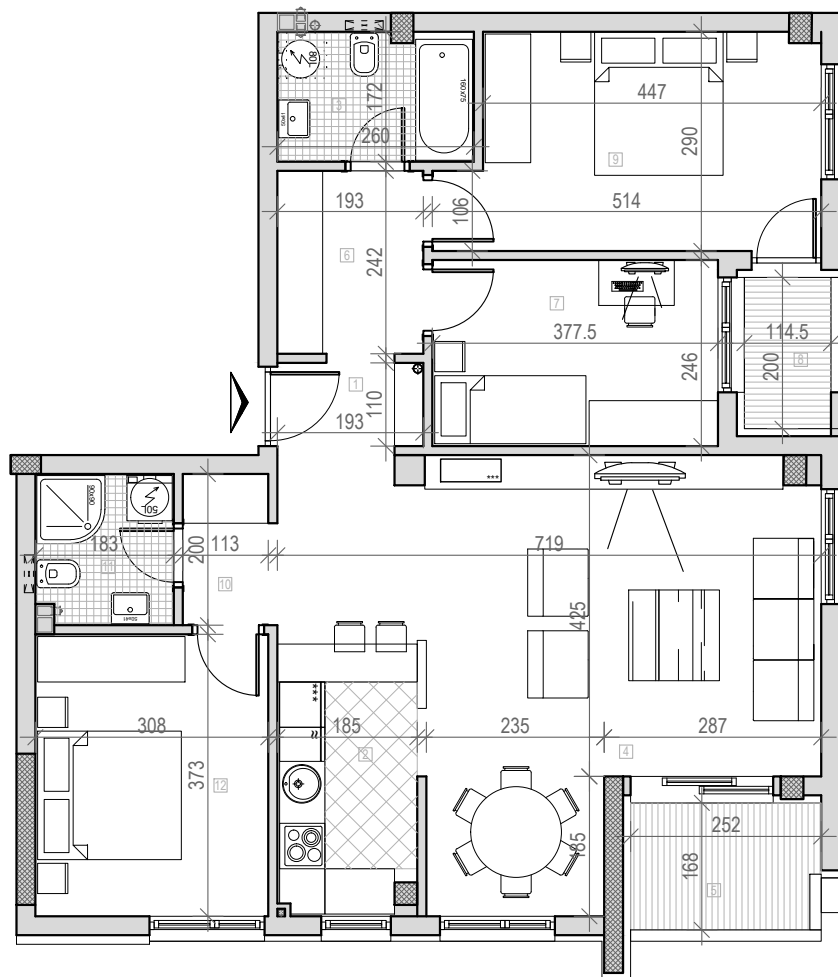


osnova stana br. 23  
potkrovlje



## STAMBENA ZGRADA

Po+P+2+Pk







Novi Sad, Ul. Bele njive 39 i 41

K.P. 8497 i 8498, K.O. Novi Sad I

POTKROVLJE STAN BR. 23		
br.	prostorija	površina/m <sup>2</sup>
1	ULAZ	2,51
2	KUHINJA	6,20
3	KUPATILO	4,47
4	DN. SOBA	31,75
5	LOĐA	4,23
6	DEGAŽMAN	4,67
7	SP. SOBA	9,29
8	LOĐA	2,30
9	SP. SOBA	13,68
10	DEGAŽMAN	2,44
11	KUPATILO	3,66
12	SP. SOBA	11,49
<b>UKUPNO</b>		<b>96.69m<sup>2</sup></b>



**LEGENDA SIMBOLA:**

	VENTILATOR
	KANALIZACIONA VERTIKALA
	VENTILACIONI KANAL
	RADIATOR/SUŠAČ (KUPATILO)
	UNUTRAŠNJA JEDINICA KLIME
	SPOLJNA JEDINICA KLIME

