

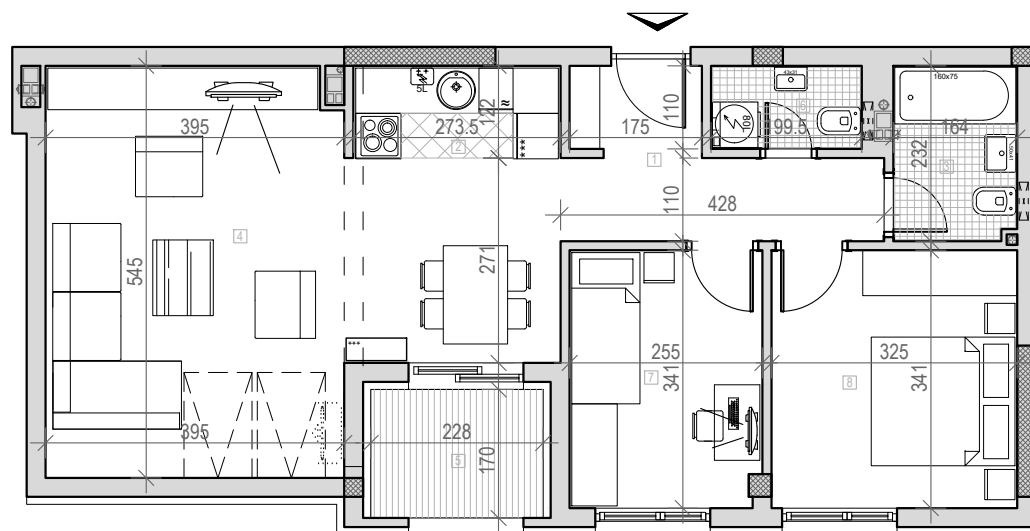
osnova stana br. 24  
potkrovlje

STAMBENA ZGRADA

Po+P+2+Pk

Novi Sad, Ul. Bele njive 39 i 41

K.P. 8497 i 8498, K.O. Novi Sad I



POTKROVLJE  
STAN BR. 24

br.	prostoriya	površina/m <sup>2</sup>
1	ULAZ	6,76
2	KUHINJA	3,26
3	KUPATILO	3,80
4	DN. SOBA	23,69
5	LOBA	3,88
6	WC	2,28
7	SP. SOBA	8,62
8	SP. SOBA	11,08
	<b>UKUPNO</b>	<b>63,37m<sup>2</sup></b>

