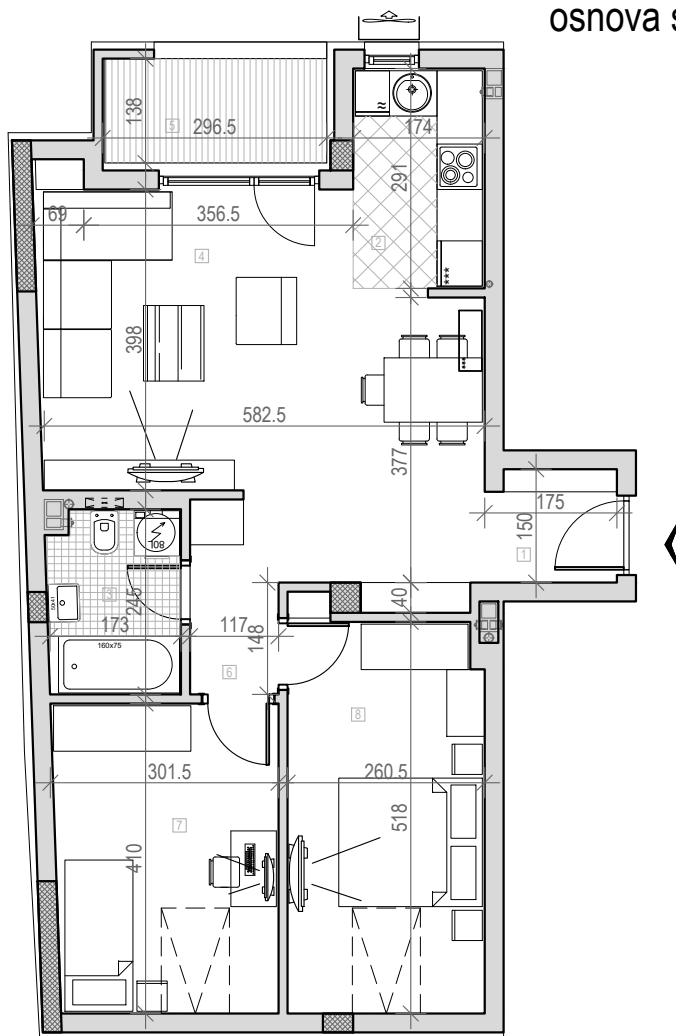


osnova stana br. 25
 potkrovlje



STAMBENA ZGRADA

Po+P+2+Pk







Novi Sad, Ul. Bele njive 39 i 41

K.P. 8497 i 8498, K.O. Novi Sad I

POTKROVLJE STAN BR. 25		
br.	prostorija	površina/m ²
1	ULAZ	2,58
2	KUHINJA	5,06
3	KUPATILO	4,34
4	DN. SOBA	26,37
5	LOĐA	4,05
6	DEGAŽMAN	1,70
7	SP. SOBA	8,14
8	SP. SOBA	10,29
UKUPNO		62,53m²



LEGENDA SIMBOLA:

-  VENTILATOR
-  KANALIZACIONA VERTIKALA
-  VENTILACIONI KANAL
-  RADIATOR/SUŠAČ (KUPATILO)
-  UNUTRAŠNJA JEDINICA KLIME
-  SPOLJNA JEDINICA KLIME

